

- The Indian Railways under the management of the Government of India is the largest Commercial undertaking in our country.
- The main business of Indian Railways is the carriage of men, materials and animals from one place to another.
- It is a mass media Transport. The Railways are the biggest employer and more than thirteen Lakh employees are working in Railways.
- Being a Commercial undertaking and a Public utility service, the Railways have social responsibility to serve the transport needs of the community as a whole.
- The Railways also help In the economic ,Social and Cultural developments of the Country.

Introduction to Indian Railways

Facts of Indian Railway

- Route KMs of I R 68,000 Kms
- Railway stations 7350
- Railway Employees 14 Lakhs.
- Trains Run
- Distance travelled



DIESEL TRACTION



AC TRACTION









दैनिक
भास्कर

ये है ट्रेन की जनरल बोगी का हाल

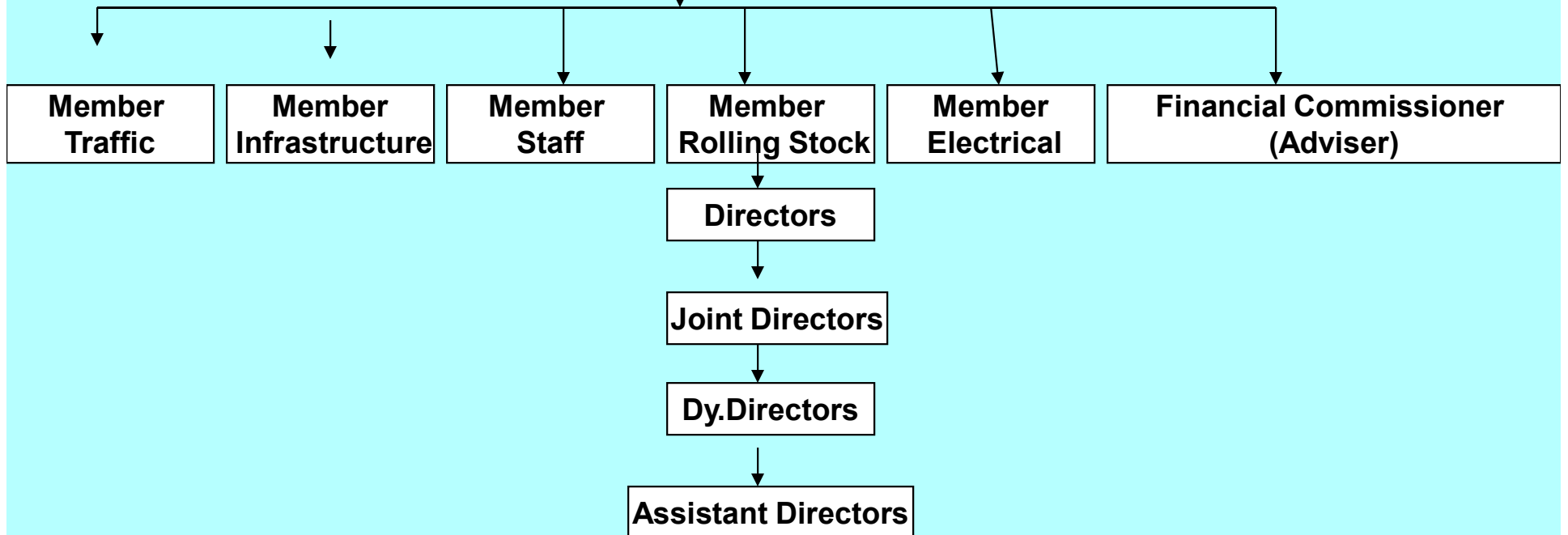


ORGANISATION SET UP

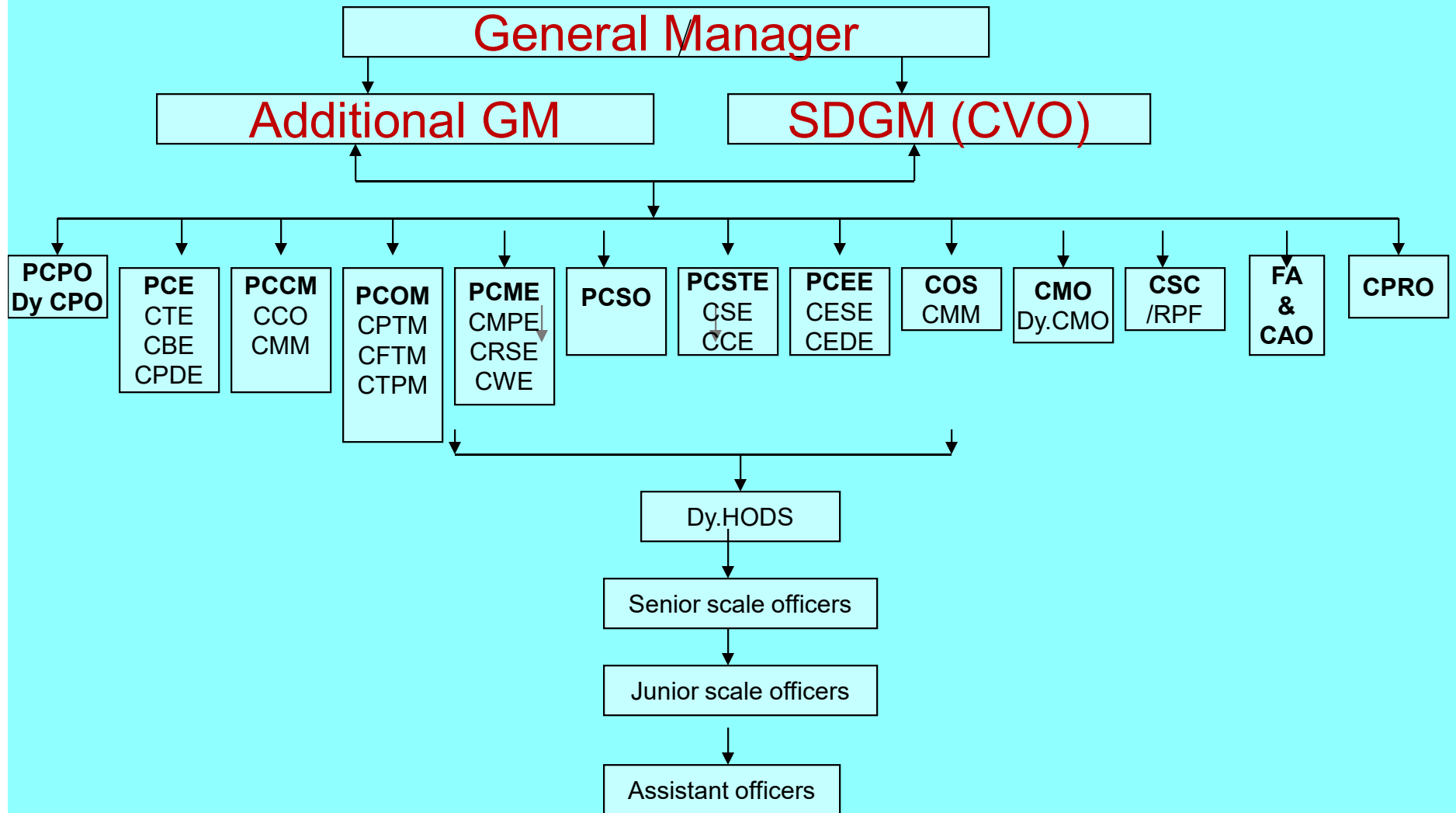
Minister of Railways

Minister of State for Railways

Chairman (Secretary to Govt. of India)



Organisation set up of Zonal Railways



SDGM - Sr.Dy.GM

CVO - Chief vigilance officer.

CE - Chief Engineer

CTE - Chief Track Engineer

CBE - Chief Bridge Engineer

CPDE - Chief Planning and Design Engineer

CCM - Chief commercial manager

CCO - Chief Claims Manager

CMM - Chief Marketing Manager

PCOM- Chief Operations Manager

CSO- Chief Safety Officer

CPTM- Chief Passenger Transportation Manager

CFTM- Chief Freight Transportation Manager

CTPM- Chief Transport Planning Manager

PCME - Chief Mechanical Engineer

CMPE - Chief Motive power Engineer.

CRSE - Chief Rolling stock Engineer

CWE - Chief work shop Engineer

PCPO - Chief Personnel Officer

CPO /G - Chief Personnel Officer/general

CSTE - Chief Signal and Telecommunication Engineer

CSE - Chief Signal Engineer

CCE - Chief Communication Engineer

PCEE - Chief Electrical Engineer

CESE - Chief Electrical supply Engineer

CEDE - Chief Electrical Distribution Engineer

COS- Controller of stores.

CMM - Chief Material Manager.

CMO - Chief Medical Officer.

Dy.CMO – Dy.Chief Medical Officer.

CSC – Chief Security Commissioner

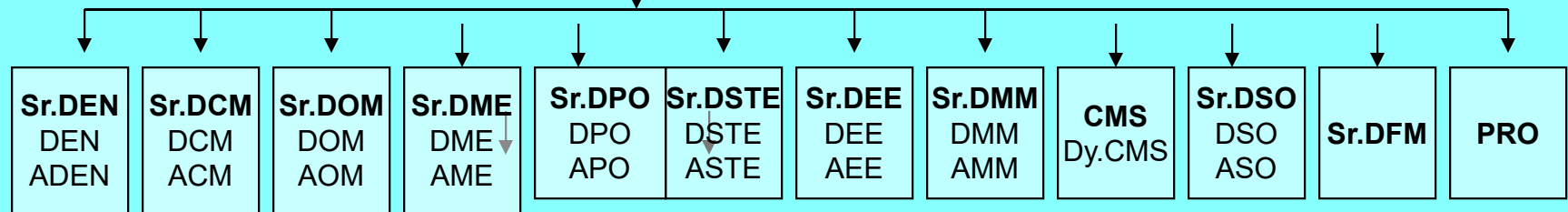
FA &CAO –Finance adviser and chief Account officer.

CPRO – Chief Public relation officer.

Divisional Level

Divisional Railway Manager

Additional Divisional Railway Manager



DEPARTMENTS AND THEIR FUNCTIONS

SIGNAL & COMMUNICATION

TRANSPORTATION

ENGINEERING

MECHANICAL

COMMERCIAL

PERSONNEL

SAFETY

ACCOUNTS

STORES

SECURITY

MEDICAL

LEAVE RULES